

QASI SMA to BMA

Features:
* Low VSWR

Applications:
* Wireless
* Transmitter
* Laboratory Test
* Radar

Electrical

Frequency: DC~18GHz
VSWR: 1.25 max.
1.15 max.(Outline A)
Impedance: 50Ω

Mechanical

RF Connectors: SMA
BMA
Outer Conductor: Passivated stainless steel
Dielectric: PTFE
Inner Conductor: Gold plated beryllium copper

Environmental

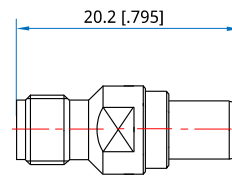
Temperature: -55~+85°C

How To Order

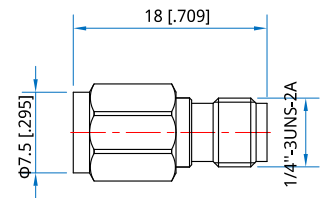
- QASI-FM** - SMA(f) to BMA(m), Outline A
- QASI-FF** - SMA(f) to BMA(f), Outline B
- QASI-MF** - SMA(m) to BMA(f), Outline C
- QASI-MM** - SMA(m) to BMA(m), Outline D
- QASIL-FM** - SMA(f) to BMA(m), flange mount Outline E
- QASIL-FM-02** - SMA(f) to BMA(m), flange mount, two holes Outline F

Customization is available upon request.

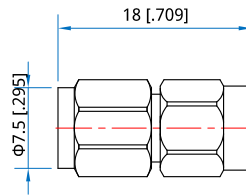
Outline Drawings



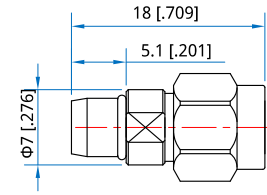
Outline A



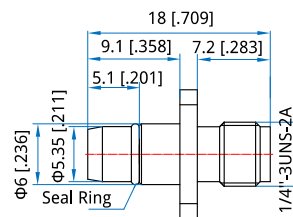
Outline B



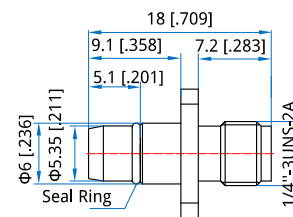
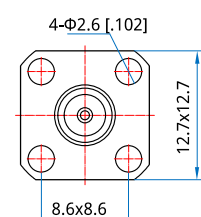
Outline C



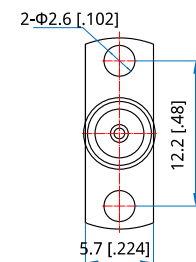
Outline D



Outline E



Outline F



Unit: mm [in]
Tolerance: ±0.2mm [±0.008in]